



MULTISCAN

All-in-one Edger Optimizer



By FINEGA Group

Combined trimmer and edger optimizer

This FINEGA « all-in-one » boards optimizer is a clever edging line for boards including a multi-saws trimmer, a 4 or 6 shifting MEM circular saws edger controlled by EGA 3D scanner and PC optimizer.

The combination of trimming, edging, resawing and sorting linked all together in one optimized line increases the recovery, flexibility, \$ value and productivity of the sawmill boards edging process.

Best in recovery and \$ value - Fast return on investment



EGA Scanner : The full shape 3D scanner measures in real time the exact profile of each board at a speed up to 40 boards per minute. Thanks to the knowledge of the board's and wane profile, the **EGA** optimizer calculates in one instant the best trimming (or length recutting) and boards edging taking into account the recovery and the \$ value of each finished products.

Trimmer : The MEM Trimmer is built with up to 14 tilting circular saws controlled by computer depending on the instruction received from the Optimizer, each board can be trimmed both length or split into 2 boards in order to save \$ value due to the concentricity and the value of each finished products.

Edger : The high speed MEM « **COBRA** » edger is equipped with 4 or 6 shifting saws combined with an accurate infeed table is able to load 2 rough boards together with different length and to set independently the optimal orientation of each boards taking into account the curve and taper of each rough board.

Boards Sorter : At the outfeed of the machine, the finished boards are separated by a CNC separating devices and conveyed to an automatic bin-sorter equipped with a boards stacker.

Main Capacity : Thickness : 15 to 125 mm - Boards Length : 1m20 to 6m50 - Minimum Length : 1,20 m
Maximum opening of the edger : 800 mm
Production : 40 boards per minute

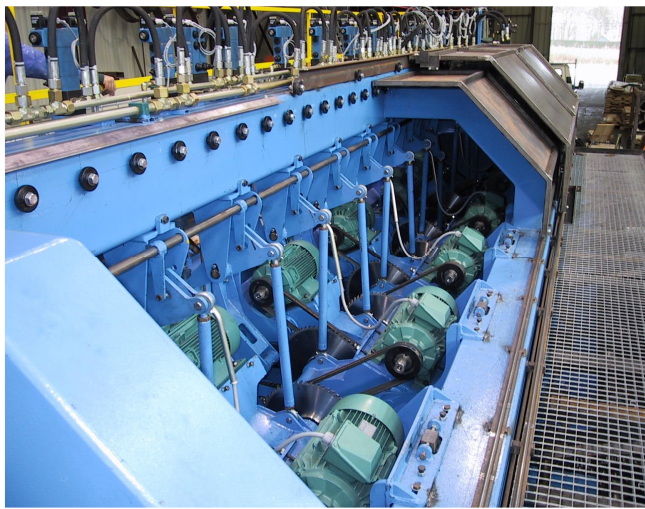
Headquarter

83 BOUCLE DE LA RAMEE - F38070 SAINT QUENTIN FALLAVIER - FRANCE
Tel: +33 (0)474 94 48 17 - Fax: +33 (0)474 94 06 93
Mail : doc@finega.com

www.memwood.com
www.ew-gillet.fr
www.segem.com
www.ciris.com



“ALL-IN-ONE” HIGH PRODUCTIVE TRIMMER and EDGER OPTIMIZER



With independent tilting circular saws (up to 14 saws), the high speed MEM trimmer can clear each end of rough boards, reduce the waste part of the board and split the income board in 2 different commercial length.

A clever EGA optimizer is controlling this automatic trimmer in order to reach 40 boards per minute.

After trimming, 2 different width boards can be loaded simultaneously onto the infeed table and independently optimized depending on the taper and the profile of each individual board.



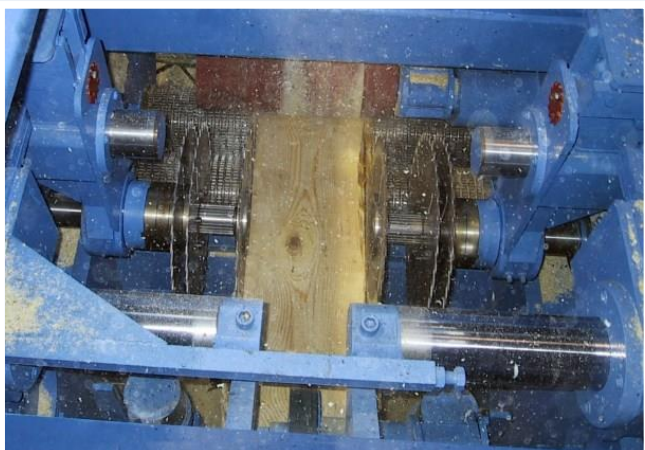
Thanks to the numerical multi-pinstops infeed table, 2 width boards can be loaded together and tapered independently before edging one by one.



View inside a 4 shifting saws edger equipped with 1 fixed size extra saw on each side.



A 4 shifting saws edger can produce 3 different squared boards
 A 6 shifting saws edger can produce 5 different squared boards.
 A sleeve equipped with fixed assembling saws can be added on each external shifting saws in order to increase the number



This document should not be considered as a contract, FINEGA reserves the right to bring any technical modification