



CIRCULAR CANTER TWIN CTC450

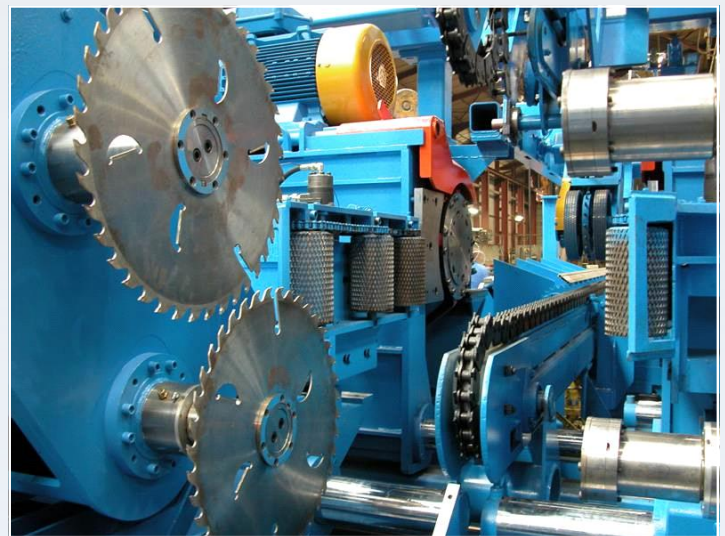
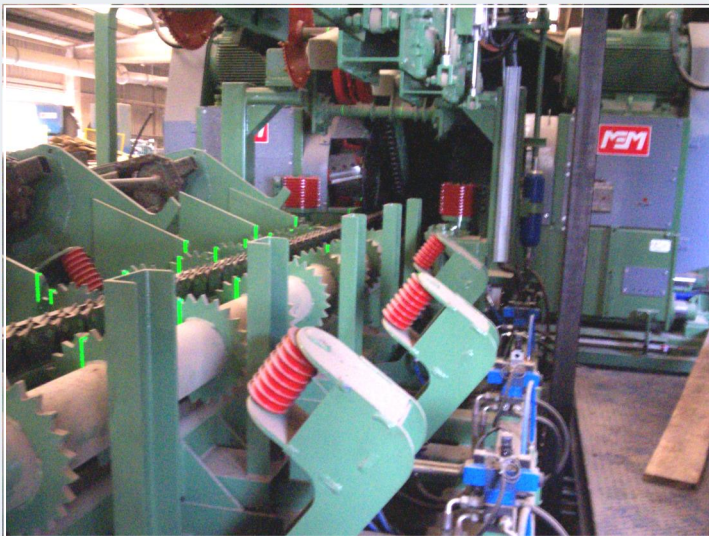


By FINEGA Group

High production sawing system with double arbour circular sawblades, coupled with a chipper canter which transforms the slabs into chips.

Thanks to the mechanized infeed table, the operator returns and skews the logs using the remote controls in combination with the moving Laser.

The cutting program is automatically selected by the optimizer software and the saws are properly sets in order to reach the best recovery.



Productivity : Up to 8 introductions/min, for logs with length 3 m.

Capacity of the machine :

Length of the log from 2 m to 6 m,
Diameter from 150 to 450 mm.

Reverse Mode :

The automatic Reverse sequence gives to this machine high flexibility and productivity for all type of cutting patterns.



FINEGA GROUP

83 BOUCLE DE LA RAMEE
F38070 SAINT QUENTIN FALLAVIER FRANCE
Tel: +33 (0)474 94 48 17 - Fax : +33 (0)474 94 06 93 - Mail : doc@finega.com

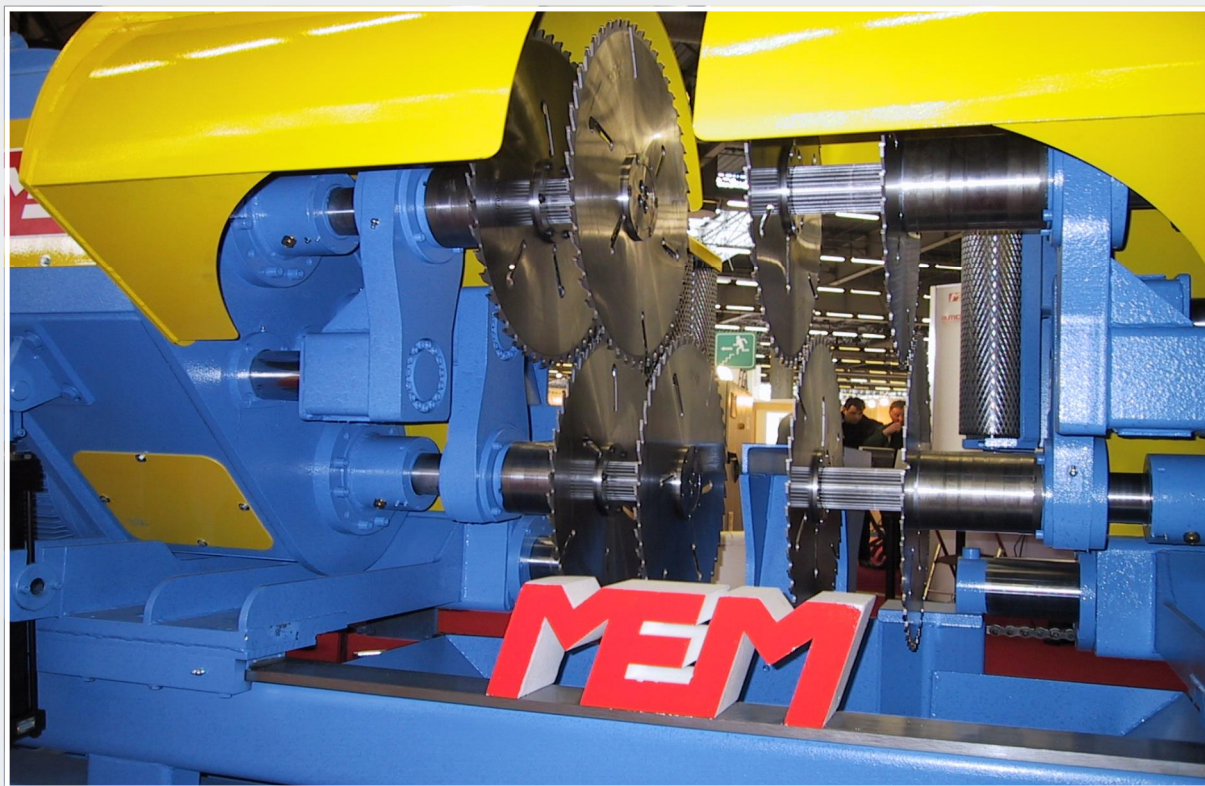
www.memwood.com
www.ew-gillet.fr
www.segem.com
www.ciris.com





By FINEGA Group

CIRCULAR CANTER TWIN CTC450



CHIPER HEADS

Canter with straight knives + finishing blade

Diameter of the finishing blade : 510 mm

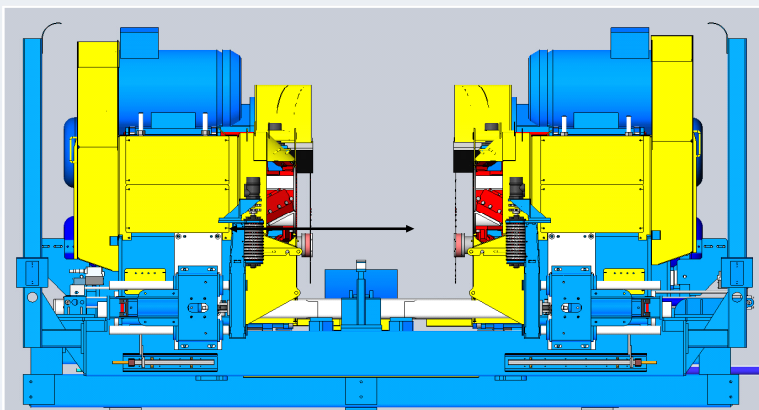
Minimum opening between heads: 110 mm

Maximum opening between heads: 875 mm

Maximum depth of cut : 150 mm

Motors : 2 x 75 kw

Number of knives : 2 x 4



TWIN CIRCULAR

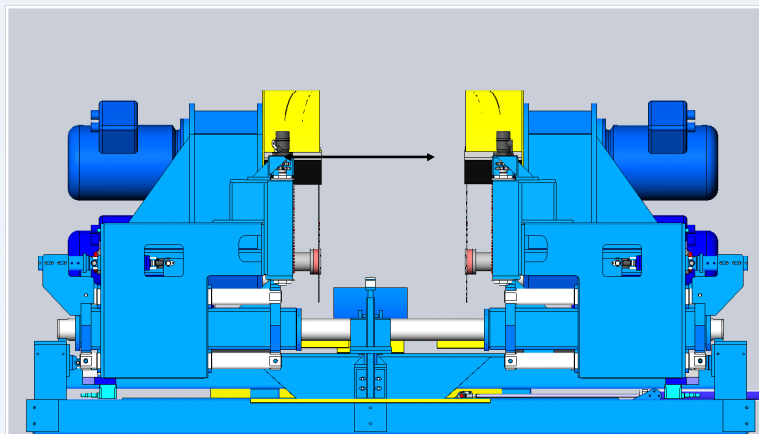
Double arbor Twin circular saws

Sawing machine with 2 shifting circular saws.

Minimum dimension between blades = 70 mm

Maximum depth of cut : 450 mm,

Motors from 2 x 55kw to 2 x 90 kw.



FINEGA GROUP

83 BOUCLE DE LA RAMEE

F38070 SAINT QUENTIN FALLAVIER FRANCE

Tel: +33 (0)474 94 48 17 - Fax : +33 (0)474 94 06 93 - Mail : doc@finega.com

www.memwood.com

www.ew-gillet.fr

www.segem.com

www.ciris.com